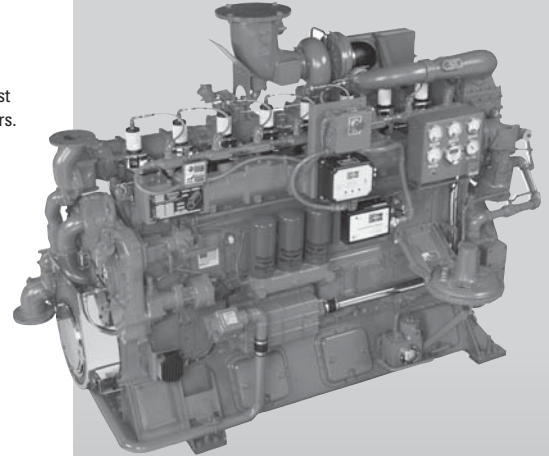


**STANDARD EQUIPMENT**

- AIR CLEANER** – Two Stage, dry panel type with rain shield and service indicator. Engine mounted.
- BARRING DEVICE** – Manual.
- BREATHER** – Crankcase, closed type (mounted).
- CARBURETOR** – Single natural gas Impco 600 for low fuel pressure.
- CONNECTING RODS** – Drop forged alloy steel, angle split, serrated joint, oil jet piston pin lubrication.
- COOLING SYSTEM** – Jacket water: gear driven pump, thermostatically controlled, full flow bypass type with nominal 180° F (82° C) outlet temperature. Auxiliary water: gear driven pump supplies water to intercooler and oil cooler circuit.
- CRANKCASE** – Alloy cast iron, fully ribbed, integral with cylinder frame.
- CRANKSHAFT** – Drop forged alloy steel, dynamically balanced and fully counterweighted. Viscous vibration dampener.
- CYLINDERS** – Removable wet type liners of centrifugally cast alloy iron.
- CYLINDER HEADS** – Eight interchangeable, valve-in-head type, with two hard faced intake and two hard faced exhaust valves per cylinder. Replaceable intake and exhaust valve seats. Mechanical valve lifters with pivoted roller followers.
- EXHAUST SYSTEM** – Water cooled exhaust manifold, Outlet flange for ANSI 8" 125# flange.
- FLYWHEEL** – With 150 tooth ring gear (for Delco electric and air/gas starters). Flywheel machined to accept SAE 620D, 18" (457 mm) diameter clutch.
- FLYWHEEL HOUSING** – SAE #0 nodular iron housing. Provision for two magnetic pickups and vertical mounting pads.
- GOVERNOR** – Woodward SG hydraulic with manual speed control.
- IGNITION** – Waukesha Custom Engine Control electronic ignition system with coils, cables and spark plugs. Non-shielded. 24V DC power required. Includes emergency stop/service engine protection switch for local override of remote controls.
- INTERCOOLER** – Air-to-water.
- LIFTING EYES** – For engine only.
- LUBRICATION SYSTEM** – Gear type pump, full flow spin-on filters and industrial base type oil pan, 56 gallon (212 litres) capacity, including filters. Engine mounted plate type oil cooler.
- MOUNTING** – Base type oil pan.
- PAINT** – Oilfield orange.
- PISTONS** – Aluminum alloy, three ring, with deep central combustion bowl. Oil jet cooled with full floating piston pin. 8.6:1 compression ratio.
- TURBOCHARGER** – Exhaust driven, dry type with wastegate. For 1350 – 1800 rpm applications.

**VGF® Series Gas Engine**

415 - 585 BHP (310 - 438 kWb)



Engine shown with options.

**Model H24GSID**

Turbocharged and Intercooled, Draw-Thru Carburetion, Eight Cylinder, Four-Cycle Gas Fueled Engine

**SPECIFICATIONS**

<b>Cylinders</b>	<b>Lube Oil Capacity</b>
Inline 8	56 gal. (212 L)
<b>Piston Displacement</b>	<b>Low Fuel Pressure System</b>
1462 cu. in. (24 L)	8" WC - 5-psig (According to regulator used:
<b>Bore &amp; Stroke</b>	0.02 - 0.34 bar)
5.98" x 6.5" (152 x 165 mm)	<b>Starting System</b>
<b>Compression Ratio</b>	150 psi max.
8.6:1	air/gas
<b>Jacket Water System Capacity</b>	24V DC electric
20 gal. (75 L)	<b>Dry Weight</b>
	7500 lb. (3400 kg)

Cooling Water Flow at	1500 rpm	1800 rpm
Jacket Water gpm (l/m)	104 (394)	130 (492)
Aux. Water gpm (l/m)	25 (95)	35 (133)



## POWER RATINGS: H24GSID VGF SERIES GAS ENGINES

Model	I.C. Water Inlet Temp. °F (°C) (Tcra)	C.R.	Bore & Stroke in. (mm)	Displ. cu. in. (litres)	Brake Horsepower (kWb Output)							
					1400 rpm		1500 rpm		1600 rpm		1800 rpm	
					I	C	I	C	I	C	I	C
H24GSID	130° (54°)	8.6:1	5.98 x 6.5 (152 x 165)	1462 (24)	455 (339)	415 (310)	490 (366)	445 (332)	520 (388)	475 (354)	585 (436)	530 (395)

**Rating Standard:** All models; Ratings are based on ISO 3046/1-1995 with mechanical efficiency of 90% and auxiliary water temperature Tcra (clause 10.1) as specified limited  $\pm 10^\circ\text{F}$  ( $\pm 5^\circ\text{C}$ ). Ratings are also valid for SAE J1349, BS5514, DIN6271 and AP17B-11C standard atmospheric conditions.

**Intermittent Power Rating:** The highest load and speed which can be applied in variable speed mechanical system application only. Operation at this rating is limited to a maximum of 3500 hours per year.

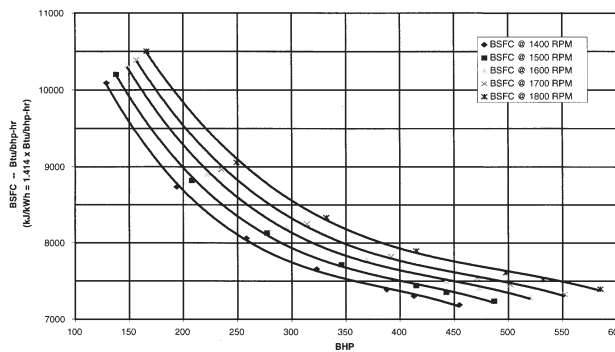
**ISO Standard Power/Continuous Power Rating:** The highest load and speed which can be applied 24 hours a day, seven days a week, 365 days per year except for normal maintenance, it is permissible to operate the engine at up to 10% overload, or maximum load indicated by the intermittent rating, whichever is lower, for two hours in each 24 hour period.

**Standby Power Rating:** This rating applies to those systems used as a secondary source of electrical power. This rating is the output the system will produce continuously (no overload), 24 hours per day for the duration of the prime power source outage.

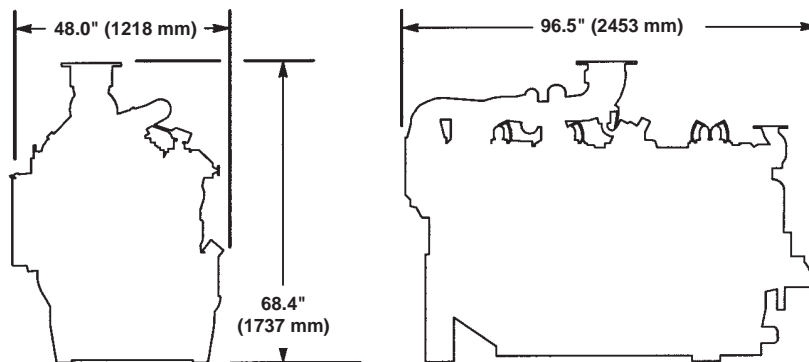
All natural gas engine ratings are based on a fuel of 900 Btu/ft<sup>3</sup> (35.3 MJ/nm<sup>3</sup>) SLHV, with a 91 WKI®. For conditions or fuels other than standard, consult the Dresser Waukesha Application Engineering Department.

Consult your local Waukesha Distributor for system application assistance. The manufacturer reserves the right to change or modify without notice, the design or equipment specifications as herein set forth without incurring any obligation either with respect to equipment previously sold or in the process of construction except where otherwise specifically guaranteed by the manufacturer.

### FUEL CONSUMPTION 130°F (54°C) INTERCOOLER WATER TEMPERATURE 180°F (82°C) JW TEMPERATURE



C1132-10



L8072-8

Bulletin 7075 1008

Dresser Waukesha  
1101 West St. Paul Avenue · Waukesha, WI 53188-4999  
Phone: (262) 547-3311 · Fax: (262) 549-2795

©2008 Dresser Inc. Waukesha, VHP, Series Four, Microspin, ESM, and Waukesha Knock Index are trademarks/registered trademarks of Dresser Waukesha, Dresser, Inc.

**DRESSER® Waukesha**

www.dresser.com